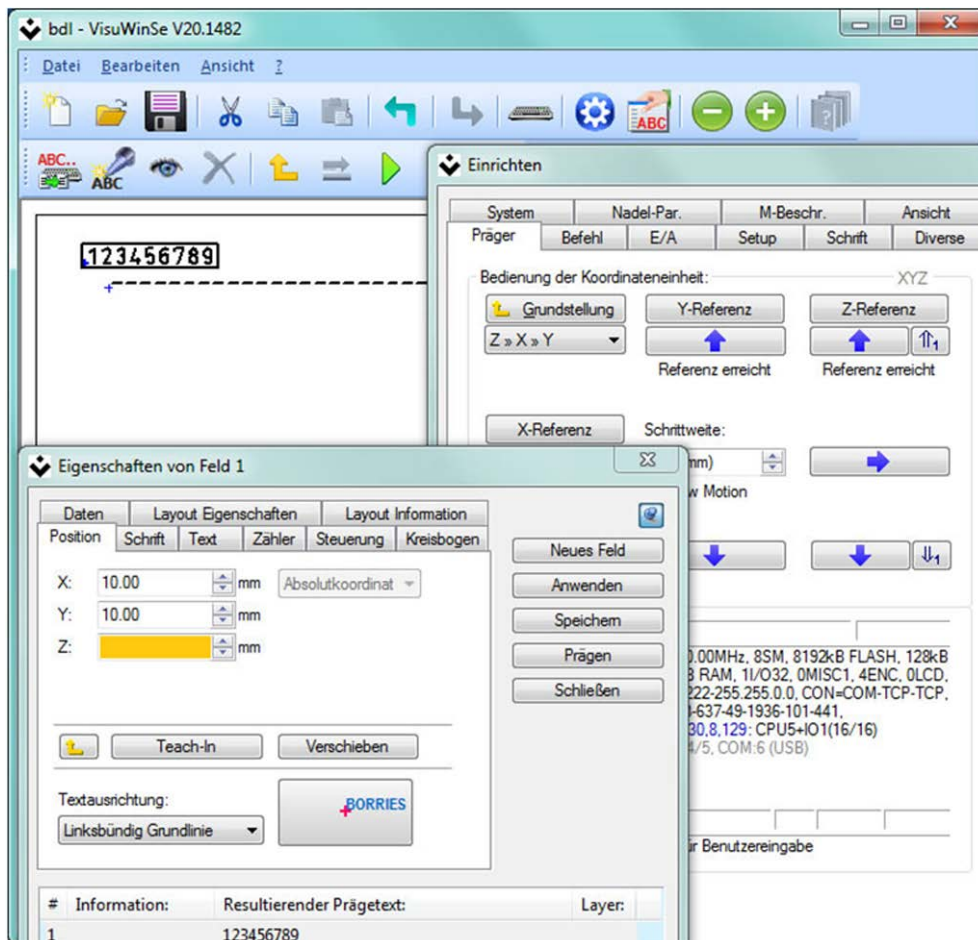




Marking-Software VisuWin SE

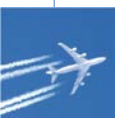
Technical data sheet



Application area

A computer-supported software program for controlling the Borries marking controller. Menu-controlled and configurable to cover a wide variety of applications from scribe, dot and data matrix marking systems. Operation of the interface is intuitive due to the clearly arranged structure. Interfaces to a wide variety of peripherals as well as communication with production control systems are possible.

The "VisuWin SE" software is predestined for the field of nameplate marking systems and manually-operated marking systems for a wide variety of workpieces or workpieces that frequently change.





Basic functions

- True image display when creating, processing and marking images (layouts).
- Functions for date, time, work shift, counters and serial numbers.
- Storing workpiece images (layout dependent).
- 15 character sets for dot font, scribe lettering and data matrix code (ECC200, GS1). Special characters, logos and 3 customizable character sets.
- Square and rectangular data matrix codes with up to 52 x 52 dots and 16 x 48 dots.
- Plot files (HPGL) or convertible from DXF (optional converter).
- Data transfer by barcode scanners, serial (STX/ETX, 3964R), fieldbus, file transfer or network interface (TCP/IP).
- Acceptance of external full or partial data.
- Different controls of the data can be configured: Chassis number (Modulo11), Modulo43, length and format.
- Order management (jobs).
- Predictive maintenance: independent maintenance message and monitoring of operating data.
- Unlimited number of layouts (100 fields with a maximum of 128 characters per line per layout).
- Data queue.
- Global variables for multiple layouts.
- Protection against double marking (up to 10,000 numbers).
- Logging of data for backups or updates.
- Control of up to six motor axes.
- User interface with language switching.
- Password functions.
- Interface simulation wizard.
- Comprehensive and detailed software description.
- Status display and control of the digital inputs and outputs.
- Configurable font parameters:

Font height	Character width	Angle	Arc
Text width	Character spacing	Marking direction	Alignment of the text

And many other configuration options





Optional equipment

- Interfaces:
 - Digital I/O signals
 - Profibus DP
 - Profinet I/O
 - Profinet IRT
 - DeviceNet
 - Ethernet/IP
- Marking of round parts
- Control panel
- Sampling function: tolerance compensation for a constant distance to the workpiece surface
- Tool checks (needle break, piston movement)
- Workpiece queries and start conditions
- Workpiece clamping
- Camera system

Other functions on request.

Minimum requirements for PC and operating system

- Operating system: Windows® XP/ 7/ 8.1/ 10 (all 32/64-bit)
- Processor: Single core processor min. 1.5 GHz.
- Random access memory: 2 GB RAM
- Hard disk space: 100 MB free memory space
- Graphics card/Monitor: Resolution min. 1024 x 786 pixels
- Interface to marking controller: Ethernet, serial (RS232C) or USB 2.0
- Data interface: Ethernet, USB or serial (RS232C)

Technical details are subject to change.

